

## Standard Container Specifications

NOTE: average specifications are given as an indication only. Variations can be found between Air lines, series and makes.

### LD-1

IATA ULD Code: AKC Contoured Container  
Also known as: AVC, AVD, AVK, AVJ  
Forkable: AVY  
Classification: LD-1  
Rate Class: Type 8  
Suitable for: B747, B767, B777, MD-11  
Internal volume: 4.8 cu. m (169.5 cu. ft)  
Maximum gross weight: 1588 kg (3501 lb)



### LD-6

IATA ULD Code: ALF Contoured Container  
Also known as: AWD, AWF  
Forkable: AWC  
Classification: LD-6  
Rate Class: Type 6W  
Suitable for: A300, A310, A330, A340, B747, B777, DC-10, MD-11, L1011  
Internal volume: 8.9 cu. m (314 cu. ft)  
Maximum gross weight: 3175 kg (7000 lb)



### LD-2

IATA ULD Code: DPE Contoured Container  
Also known as: APA, DPA  
Forkable: DPN  
Classification: LD-2  
Rate Class: Type 8D  
Suitable for: B767  
Internal volume: 3.4 cu. m (120 cu. ft)  
Maximum gross weight: 1225 kg (2700 lb)



### LD-7

IATA ULD Code: XAW P1P Pallet with fixed angle wings and net  
Classification: LD-7  
Rate Class: Type 5  
Suitable for: Wide body. All aircraft  
Maximum volume with overhang: 14.0 cu. m (494 cu. ft)  
Maximum gross weight: 5000 kg (11023 lb)



### LD-3

IATA ULD Code: AKE Contoured Container  
Also known as: AKE, AVA, AVB, AVC, AVK, AVA, DVE, DVP, XKS, XKG  
Forkable: AKN, AVN, DKN, DVN, XKN  
Classification: LD-3  
Rate Class: Type 8  
Suitable for: A300, A310, A330, A340, B747, B767, B777, DC-10, MD-11, L1011  
Internal volume: 4.3 cu. m (152 cu. ft)  
Maximum gross weight: 1588 kg (3500 lb)



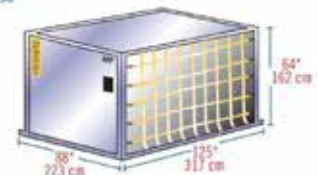
### LD-8

IATA ULD Code: DQF  
Also known as: ALE, ALN, DLE, DLF, DDP, MQP  
Classification: LD-8  
Rate Class: Type 6A  
Suitable for: B767  
Internal volume: 6.85 cu. m (242 cu. ft)  
Maximum gross weight: 2450 kg (5401 lb)



### LD-9

IATA ULD Code: AAP Enclosed Pallet on P1P base  
Also known as: AA2, XAG, XAV  
Classification: LD-9  
Rate Class: Type 5  
Suitable for: A300, A310, A330, A340, B747, B767, DC-10, MD-11, L1011  
Internal volume: 9.1 cu. m (321 cu. ft)  
Maximum gross weight: 4624 kg (10194 lb) lower deck  
6000 kg (13227 lb) main deck



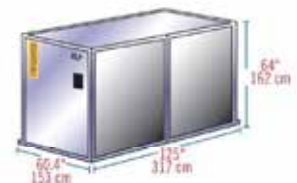
### Insulated LD-3

IATA ULD Code: RKN  
Classification: LD-3  
Rate Class: Type 8  
Suitable for: A300, A310, A330, A340, B747, B767, B777, DC-10, MD11, L1011  
Internal volume: 3.0 cu. m (109 cu. ft)  
Maximum gross weight: 1588 kg (3500 lb)  
Temperature Control Range: -20C to +20C



### LD-11

IATA ULD Code: ALP Rectangular Container  
Also known as: ALD, AW2, AWB, AWD, ANZ, DLP, DWB, MNB  
Refrigerated version: RWB, RWD, RWZ  
Classification: LD-11  
Rate Class: Type 6  
Suitable for: A300, A310, A330, A340, B747, B777, DC-10, MD-11, L1011  
Internal volume: 7.2 cu. m (253 cu. ft)  
Maximum gross weight: 3176 kg (7002 lb)



### LD-4

IATA ULD Code: ALP Rectangular Container  
Also known as: ALD, AWD, ANZ, DLP  
Forkable: ALB, ALC, AWB, AWC  
Classification: LD-4  
Rate Class: Type 8  
Suitable for: B767, B777  
Internal volume: 5.7 cu. m (201 cu. ft)  
Maximum gross weight: 2449 kg (5399 lb)



### A-2

IATA ULD Code: DAA  
Classification: A-2  
Suitable for: B747, B747F, DC8, DC10, A300/F  
Internal volume: 12.6 cu. m (444 cu. ft)  
Maximum gross weight: 6033 kg (13300 lb)

